



Winchester
City Council

**Twyford
Neighbourhood Development Plan**

**Information Statement for Referendum
on
13th January 2022**

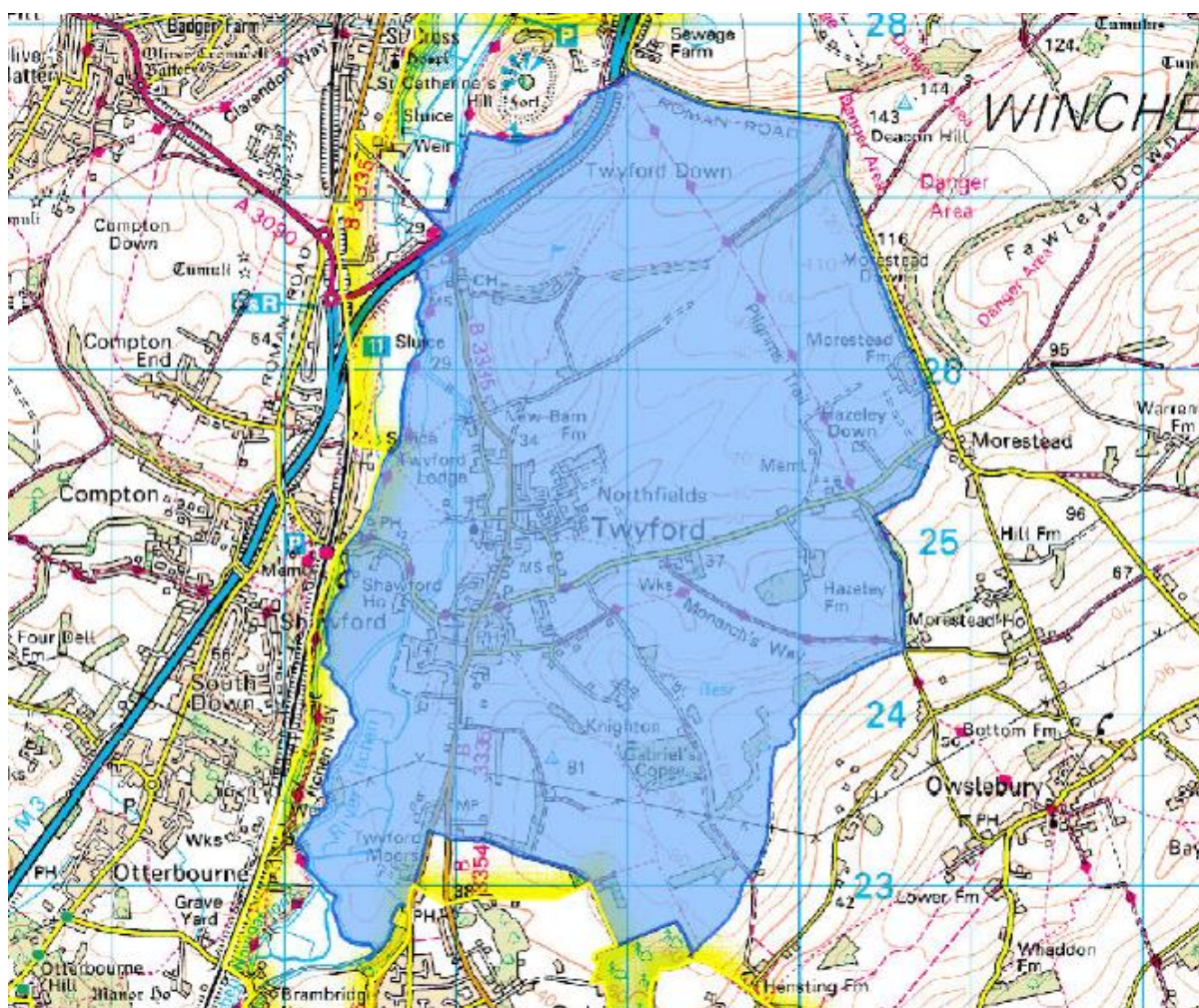
Introduction

A referendum on the Twyford Neighbourhood Development Plan will be held on Thursday, 13 January 2022. The referendum will be conducted based on procedures, which are similar to those used at local government elections.

The question to be asked in the referendum is:

‘Do you want the South Downs National Park Authority to use the neighbourhood development plan for the Parish of Twyford to help it decide planning applications in the neighbourhood area?’

The neighbourhood area is the entire Parish of Twyford and is highlighted in blue on the map below. The National Park boundary is shown in yellow. The entire parish of Twyford is within the South Downs National Park:



Can I vote?

You can vote in the referendum if you live in Twyford and:

- you are registered to vote in local council elections; and
- you are 18 years of age or over on Thursday, 13 January 2022.

You have to be registered to vote by Midnight on Wednesday 22 December 2021, to vote in the referendum. You can check if you are registered to vote by calling 01962 848125.

Referendum Expenses

The Referendum expenses limit that will apply in relation to the Referendum is £2436.69. The number of persons entitled to vote in the Referendum by reference to which the limit has been calculated is 1266.

Specified Documents

The relevant regulations state that we must make available the following documents:

- The referendum version of the Twyford Neighbourhood Development Plan
- The independent examiner's report on the draft Twyford Neighbourhood Development Plan
- A copy of the representations submitted to the independent examiner
- A statement setting out that the South Downs National Park agrees that the Twyford Neighbourhood Development Plan meets the basic conditions and relevant Regulations (included within the document known as the Decision Statement)
- A statement setting out general information as to town and country planning (including neighbourhood planning) and the referendum (included within the 'Twyford Neighbourhood Development Plan: Information for Voters, document)

A link to these documents is available online at [Twyford Neighbourhood Plan - South Downs National Park Authority](#) this webpage also includes all other documents relating to Twyford Neighbourhood Development Plan.

Copies are also available for inspection at the council offices of:

- Winchester City Council, City Offices, Colebrook St, Winchester SO23 9LJ (Monday to Friday 9.00am - 5.00pm) and
- Twyford Post Office, High Street, Twyford, Winchester, SO21 1NH (Monday – Sunday 7am – 7pm)
- South Downs National Park Authority, South Downs Centre, North Street, Midhurst, West Sussex, GU29 9DH (Monday to Friday 9.00am - 5.00pm)